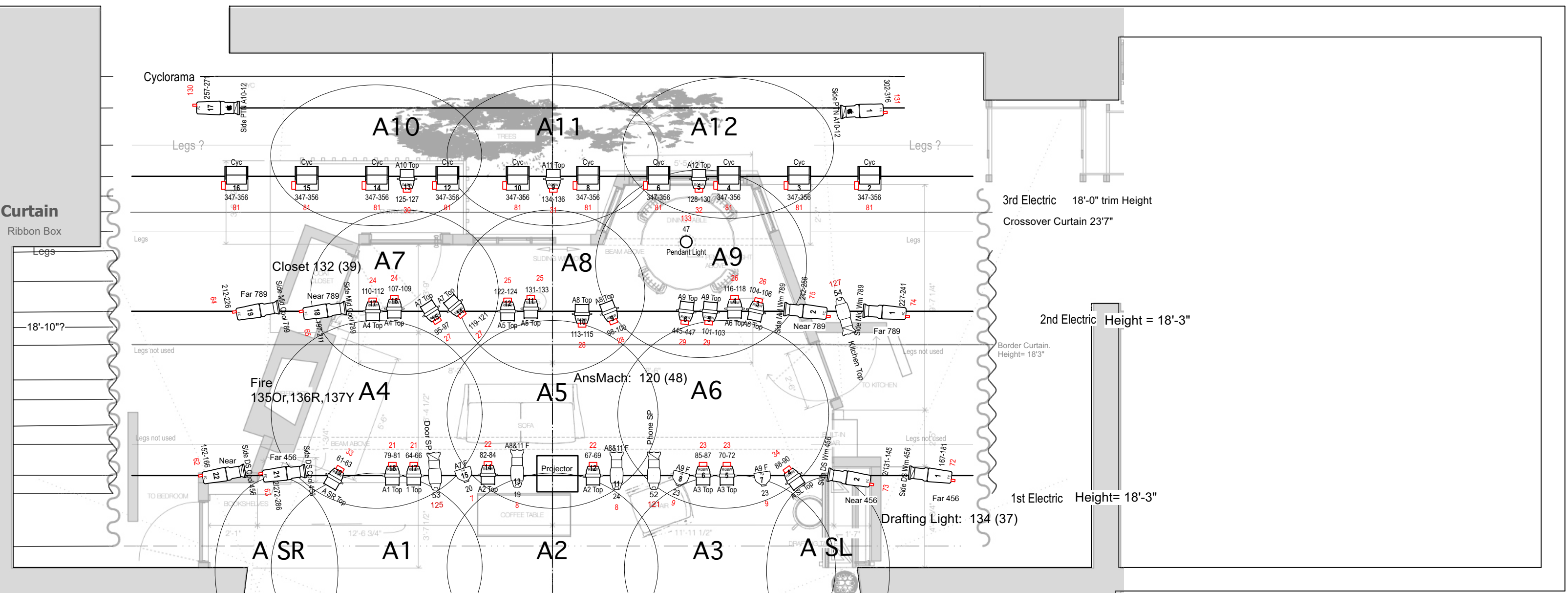


- 19 - 1 speed - **Cyc**
- 18 - variable-speed **Open**
- 17 - variable-speed - **Legs + Teaser**
- 16 - 1 speed - **3rd Electric**
- 15 - 1 speed **Open**
- 14 - variable-speed - **Crossover Curtain**
- 13 - variable-speed - **Legs**
- 12 - 1 speed -
- 11 - variable-speed **Open**
- 10 - 1 speed - **2nd Electric**
- 9 - variable-speed **Border**
- 8 - variable-speed - **Legs**
- 7 - variable-speed **Open**
- 6 - variable-speed **Open**
- 5 - 1 speed - **Teaser**
- 4 - variable-speed - **Legs**
- 3 - 1 speed - **1st Electric**
- 2 - variable-speed **Open**
- 1 - variable-speed - **Act Curtain**



HL Side 1

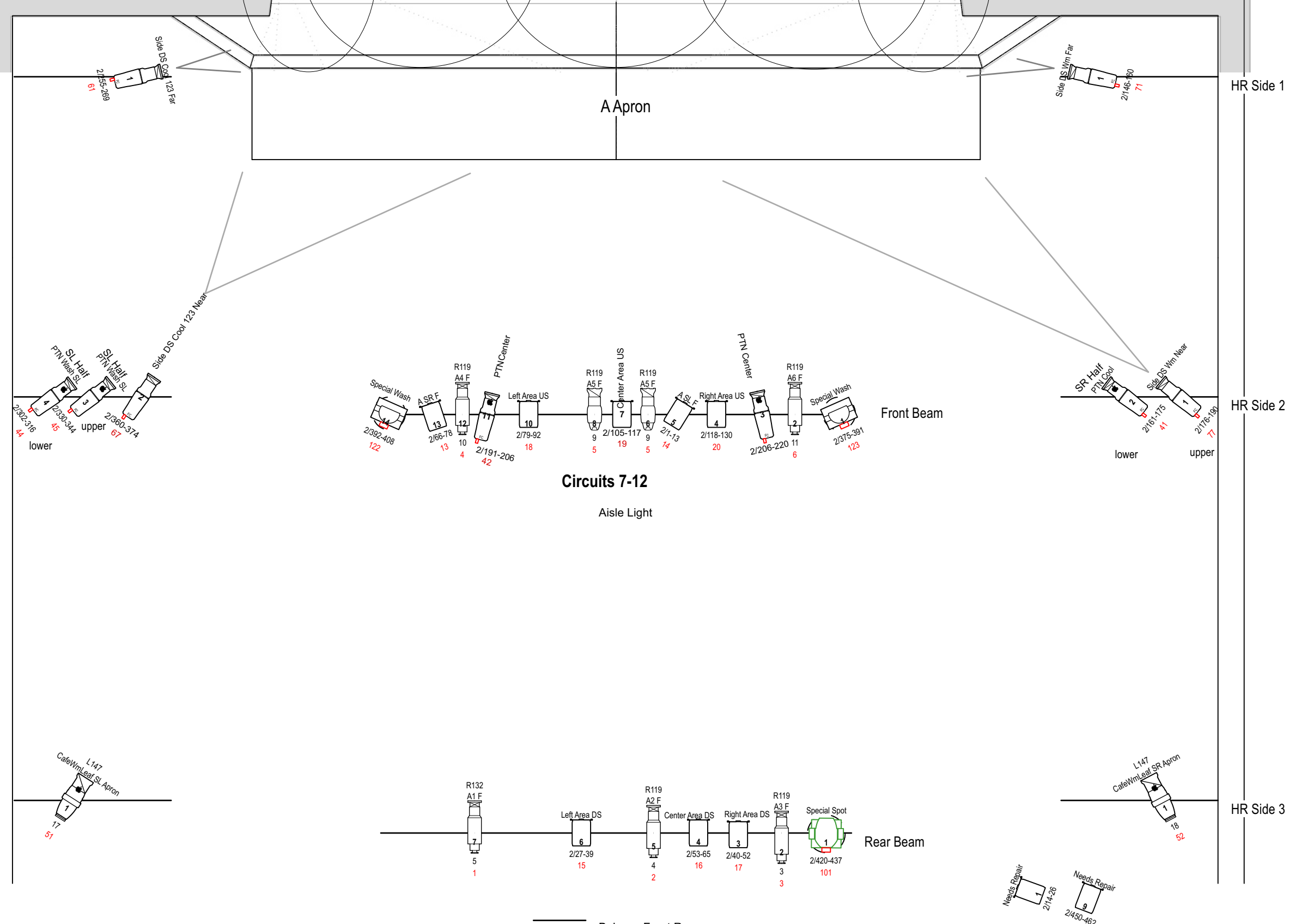
HR Side 1

HL Side 2

HR Side 2

HL Side 3

HR Side 3



Light	Model	Quantity
ETC Source4 PARnel	ETC Source4 PARnel	4 / 4
Altman 360Q 4.5 x 6	Altman 360Q 4.5 x 6	0 / 0
Altman 360Q 6x9	Altman 360Q 6x9	0 / 0
Altman Shakespeare 20deg	Altman Shakespeare 20deg	5 / 6
Chauvet Ovation C-805FC	Chauvet Ovation C-805FC	10 / 12
Chauvet Ovation E-910 FC 26 Degree	Chauvet Ovation E-910 FC 26 Degree	13 / 14
Chauvet Ovation E-910 FC 36 Degree	Chauvet Ovation E-910 FC 36 Degree	6 / 6
Elation Fuze Par Z175	Elation Fuze Par Z175	10 / 10
ETC Source4 Jr 26deg	ETC Source4 Jr 26deg	5 / 5
ETC Source4 Jr 36deg	ETC Source4 Jr 36deg	2 / 4
Chauvet Ovation E-910 RGB Zoom	Chauvet Ovation E-910 RGB Zoom	23 / 0
Light Instr Strand LekoLite 26deg	Light Instr Strand LekoLite 26deg	2 / 5
Strand SL19	Strand SL19	0 / 0
Moving Light		
Chauvet Rogue R2 Spot	Chauvet Rogue R2 Spot	1 / 1
Chauvet Rogue R2 Wash	Chauvet Rogue R2 Wash	2 / 2
Typical		

The Nerd
 Facility: AHA Theater
 Drawing Name: Light Plot
 Date: 9/18/23
 Scale: 1/4" = 1'-0"
 Drawn By: Brian Bjorklund
 Revision/Vision: 10/25/23
 Drawing #: 1